



Chapter 05 alluded to the issue of the need to develop appropriate styles of metal gate as a response to modern need for wider and more robust access to fields, farms, etc. This implies the need to understand how tradition can be adopted to meet the demands of the present, as exemplified by a wooden style of gate executed in metal and a modern bus shelter. Both examples illustrate that tradition and modernity are not incompatible.

### 6.01 Gates

Two examples demonstrate how metal might be used to provide durable contemporary version of traditional timber prototypes that are wide enough for modern usage yet easy to maintain. Extended, cantilevered cross-bars exploit the strength of steel to accommodate wider openings, with modern steel posts used in lieu of timber or stone.



TRADITIONAL STYLES OF TIMBER GATES

CORRESPONDING METAL GATES

## 6.02

### Bus Shelter

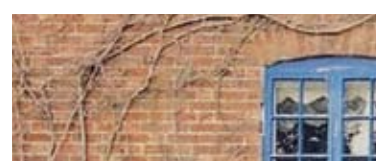
The design combines masonry, steel and glass to create a structure that could be used throughout the Cotswolds AONB. A simple steel post supports one end of an unequivocally modern, functional canopy that does not relate to any specific place. Its other end is supported by a masonry plinth with integral seating, constructed of materials that respond to its local setting. One example shows the shelter in a purely rural setting, its masonry being of dry-stone wall construction. The other is of a bus shelter in an urban setting, its masonry picking-up on its surroundings, in this case rubble stone, brick and ashlar. Chiselled stone, 'battered' stone and render could all be used, depending on context.



BUS SHELTER IN RURAL SETTING



BUS SHELTER IN URBAN SETTING



EXAMPLES OF POSSIBLE TYPES OF MASONRY

